



These are strain gauge based loadcells designed for both tension and compression loading, they are made from high tool steel alloy with Electroless nickel plating for protecting loadcells from jerk loads & corrosion. These loadcells are IP67 protected. They are used for electronic scale modified from mechanical scale, Hopper scales, force measuring systems, industrial weighing and control system.

**Features**

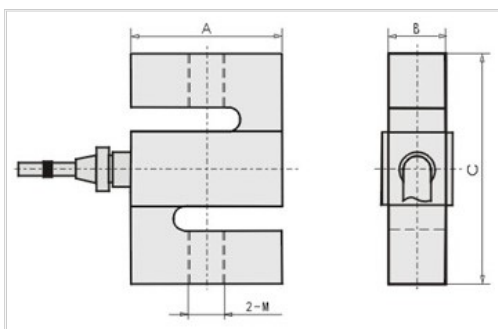
- ◆ High Tool steel Construction makes it very rugged for shock loads
- ◆ Suitable for harsh application
- ◆ Hermetically sealed having IP67 protection
- ◆ Available from 20 kg. to 10000 kg. capacities
- ◆ Designed for both tension and compression loading

**Application**

- ◆ Mainly used in Construction Equipments & Batching Plants as Sensors
- ◆ Electronic Scale Modified from Mechanical Scale
- ◆ Crane Scale
- ◆ Tension Testing Machine
- ◆ Force Measuring Systems
- ◆ Industrial Weighing and Control System

**Standard Capacities (Kg.)**

20, 50, 100, 200, 300, 500, 675, 1000, 1500, 2000, 2500, 3000, 5000, 7000, 10000



**Standard Specification :**

Nominal Output	3.0mV/V (mili Volt per Volt) & 2.0 mV/V
Excitation Voltage	9 -12 VDC ( Maximum 15 VDC )
Safe Load	150% of Rated Capacity
Ultimate Load	200% of Rated Capacity
Allowable Side Load	50% of Rated Capacity
Non Linearity	<±0.025% of FSO (Full Scale Output)
Creep (30 minutes)	<±0.030% of FSO
Non-Repeatability	≤±0.020% of FSO
Zero Balance	<±1% of FSO
Input Resistance	350 ± 5 ohms
Output Resistance	350 ± 5 ohms
Insulation resistance	Above 5000 Mega ohms
Temp. Compensation	-10°C to +40°C
Temp. Effect on Zero	≤± 0.030% of FSO /10 °C
Material	Electroless Nickel Plated Tool Steel
Environmental Protection Class	IP67.
Connection	Input : +(Red) -(Black) Output : +(Green) -(White)

**Dimension of S-type for 3 mV/V**

<b>Rated load ( kg. )</b>	<b>A</b>	<b>B</b>	<b>C</b>	<b>M</b>
20--100	50	12.5	62	M6 x 1.00
150--1000	50	25	62	M12 x 1.25
1500-5000	75	27	100	M20 x 1.5
7000	90	40	140	M24 x 2

**Dimension of S-type for 2 mV/V**

<b>Rated load ( kg. )</b>	<b>A</b>	<b>B</b>	<b>C</b>	<b>M</b>
200,450,1000	50	25	62	M12 x 1.25
2 T	75	27	100	M20 x 1.50
5 T	76	27.4	108	M20 x 1.50
500	51	19	76	M12 x 1.75
1 T	51	25.4	76	M12 x 1.75